



Voltaire Road, Clapham, SW4

1 bedroom flat - conversion for sale

£415,000

Leasehold

Property Details

A bright and airy one bedroom apartment with a lovely Victorian façade in a highly sought after location, popular for its character and proximity to Clapham High Street. The wonderful open-plan reception is bathed in natural light through Velux windows. Ideal for hosting dinner parties or relaxing within the lounge, dimensions allow for comfortable living within a stylish environment. The kitchen is equipped with modern appliances and plenty of storage space. Neatly tucked to one side, it runs in an L shape, maximising the space whilst not interrupting the flow of light, while the sink sits below a window. Tucked to the rear of the home away from the street, the bedroom is well proportioned, with plenty of space for the traditional furnishings. The bathroom is equipped with a bathtub and overhead shower, finished with a Velux window to allow the theme of light to flow seamlessly through the home. There is a parking restriction in place, mitigated by the excellent transport links on your doorstep. Share of freehold will be granted upon completion of the final flat in the building.

Features

- One double bedroom
- Victorian conversion
- Bright and airy atmosphere throughout
- Fantastic location, moments from Clapham High Street
- Excellent transport links with Clapham High Street station at the top of the road and Clapham North tube two-minutes further
- No parking permit given proximity to transport links
- A short walk to Clapham Common
- Chain free
- Share of freehold will be granted

Council tax band D

EPC rating D (58)

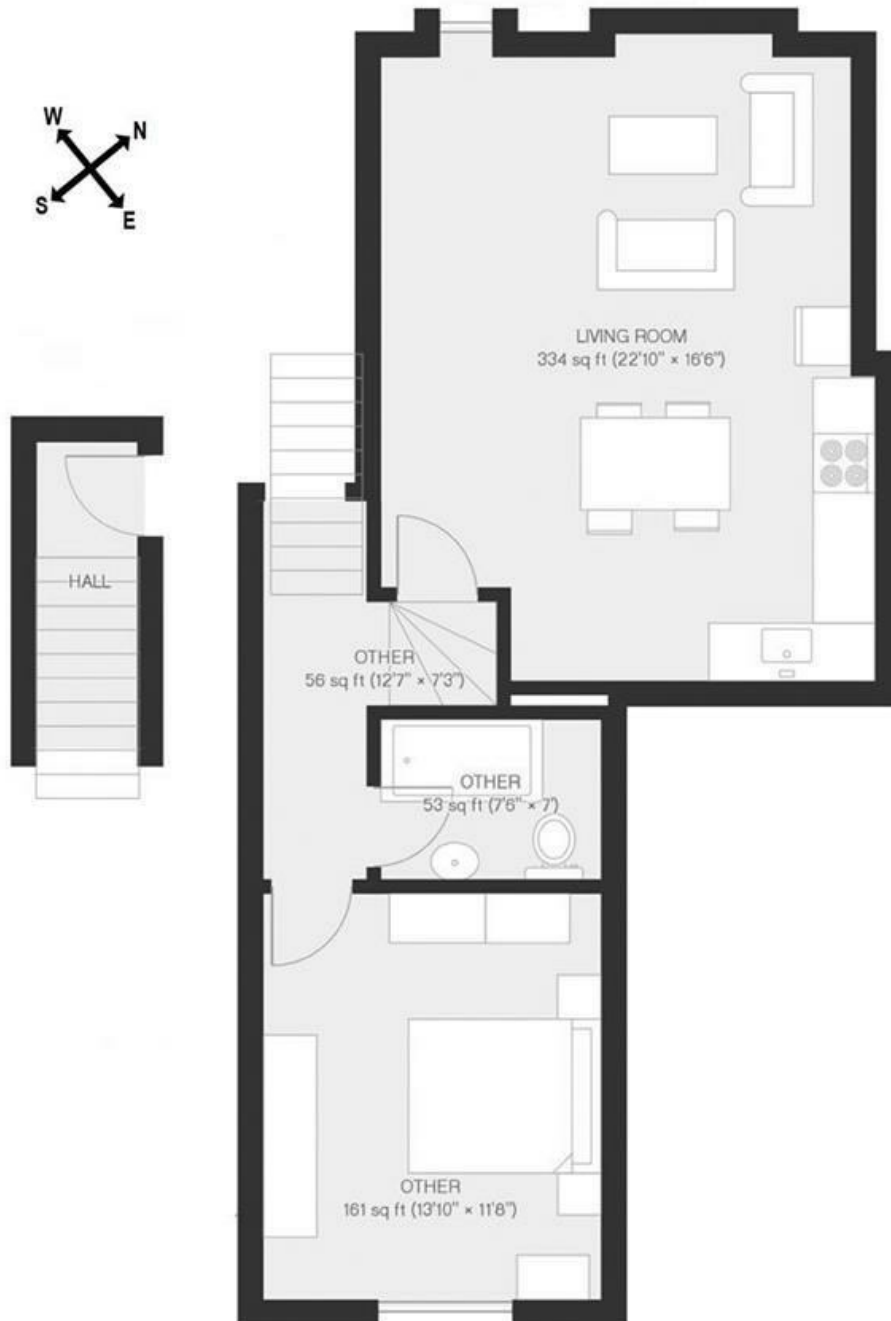


Voltaire Road, Clapham, SW4

Voltaire Road, SW4

1 Bedroom Flat

APPROXIMATE GROSS INTERNAL AREA: **639 SQ FT / 59 SQ M**



While we try our very best, floor plans are produced as a guide only and we take no responsibility for the precise accuracy with which any property is represented.

Voltaire Road, Clapham, SW4

